

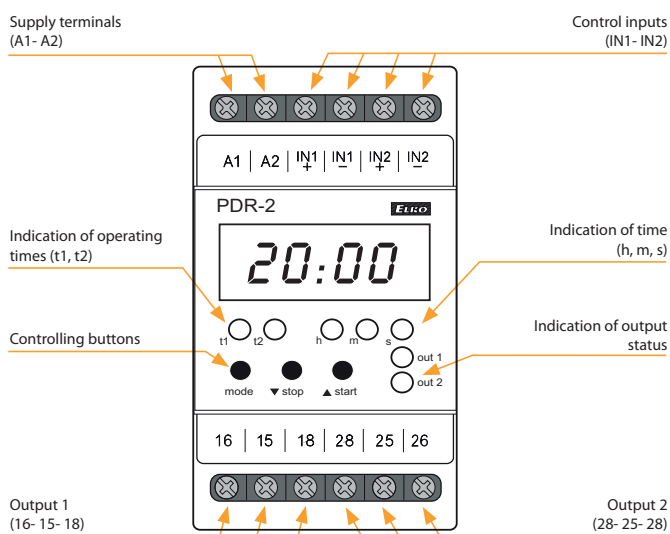


EAN code
 PDR-2A/230V: 8594030333037
 PDR-2A/UNI: 8594030333044
 PDR-2B/230V: 8594030333051
 PDR-2B/UNI: 8594030333068

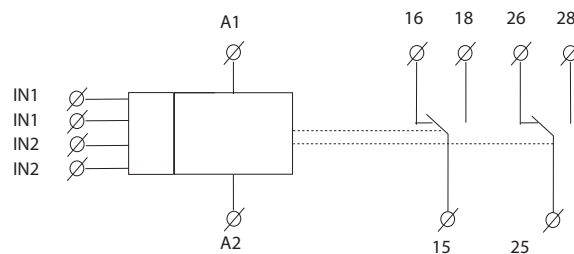
| Technical parameters | PDR-2/A | PDR-2/B |
|---|---|---------|
| Function: | 16 | 10 |
| Supply terminals: | A1 - A2 | |
| Voltage range: | AC/DC 12 - 240 V (AC 50-60 Hz) | |
| Burden (max.): | AC 0.5 - 2.5 VA/DC 0.4 - 2.5 W | |
| Voltage range: | AC 230 V (50-60 Hz) | |
| Consumption (apparent/loss): | AC max. 16 VA/2.5 W | |
| Max. dissipated power (Un + terminals): | 5.5 W | |
| Supply voltage tolerance: | -15 %; +10 % | |
| Time ranges: | 0.01 s - 100 h | |
| Repeat accuracy: | 0.2 % - set value stability | |
| Temperature coefficient: | 0.01 %/°C, at = 20 °C (0.01 %/°F, at = 68 °F) | |
| Output | | |
| Number of contacts: | 2x changeover/SPDT (AgNi/Silver Alloy) | |
| Current rating: | 16 A/AC1; 1 HP 240 Vac, 1/2 HP 120 Vac; PD. B300 | |
| Breaking capacity: | 4000 VA/AC1, 384 W/DC | |
| Inrush current: | 30 A/< 3 s | |
| Switching voltage: | 250 V AC/24 V DC | |
| Output indication: | red LED | |
| Mechanical life: | 30.000.000 ops. | |
| Electrical strength (AC1): | 60.000 ops. | |
| Control | | |
| Control input Burden: | AC 0.01 - 0.25 VA (UNI), AC 0.25 VA (AC 230 V) | |
| Glow lamps: | No | |
| Control. impulse length: | min. 1 ms/max. unlimited | |
| Reset time: | max. 200 ms | |
| Display - colour: | red | |
| Number and height of digits: | 4 positions with separating colon, height 10 mm (0.39") | |
| Luminance: | 2200 - 3800 ucd | |
| Light wavelength: | 635 nm | |
| Brightness setting: | range 20 - 100 % in 10 steps adjustable | |
| Memory - memory locations: | 30 (PDR-2/A)/20 (PDR-2/B) for times ranges + service function | |
| Data stored for: | min. 10 years | |
| Other information | | |
| Operating temperature: | -20 .. +55 °C (-4 .. 131 °F) | |
| Storage temperature: | -30 .. +70 °C (-22 .. 158 °F) | |
| Dielectric strength: | 4 kV (supply - output) | |
| Operating position: | any | |
| Mounting: | DIN rail EN 60715 | |
| Protection degree: | IP40 from front panel/IP20 terminals | |
| Overvoltage category: | III. | |
| Pollution degree: | 2 | |
| Max. cable size (mm ²): | solid wire max. 1x 2.5 or 2x 1.5/ with sleeve max. 1x 1.5 (AWG 12) | |
| Dimensions: | 90 x 52 x 65 mm (3.5" x 2" x 2.6") | |
| Weight: | 142 g (5 oz.) (230), 140 g (4.9 oz.) (UNI) | |
| Standards: | EN 61812-1 | |

- Multifunction programmable digital relay with 4 digit red LED display.
- Control and setting are done by 3 buttons, user-friendly menu, absolute accuracy in timer setting, time countdown on a display, galvanically separated START and STOP control inputs with UNI supply.
- Thanks to its complexity, it is possible to program also more demanding time functions by using 2 independent times.
- 2 independent times, with combination of 2 inputs and 2 outputs.
- PDR-2/A: 16 functions, choice of functions of the other relay, 30 memory places for most frequently used times.
- PDR-2/B: 10 functions, 1 output of 10 functions can be assigned to each relay = 2 relays in one device.

Description



Symbol

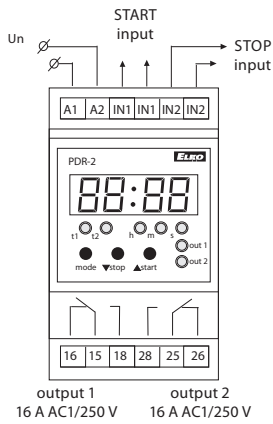


Time data

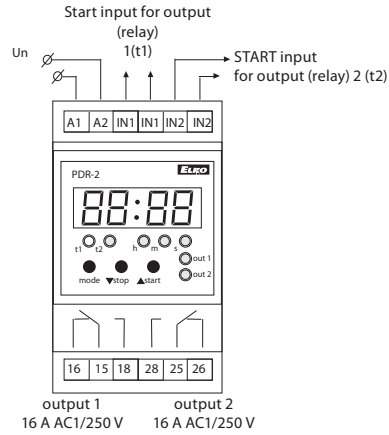
| | |
|--------------------------|-----------------------------------|
| Time range: | 0.01 s - 99 h 59 min 59 sec 99 ss |
| Minimal time step: | 0.01 s |
| Time deviation: | 0.01 % of set value |
| Setting error: | 0 % |
| Setting, reset accuracy: | 100 % |
| Digital places: | selected via program |

Connection

PDR-2/A

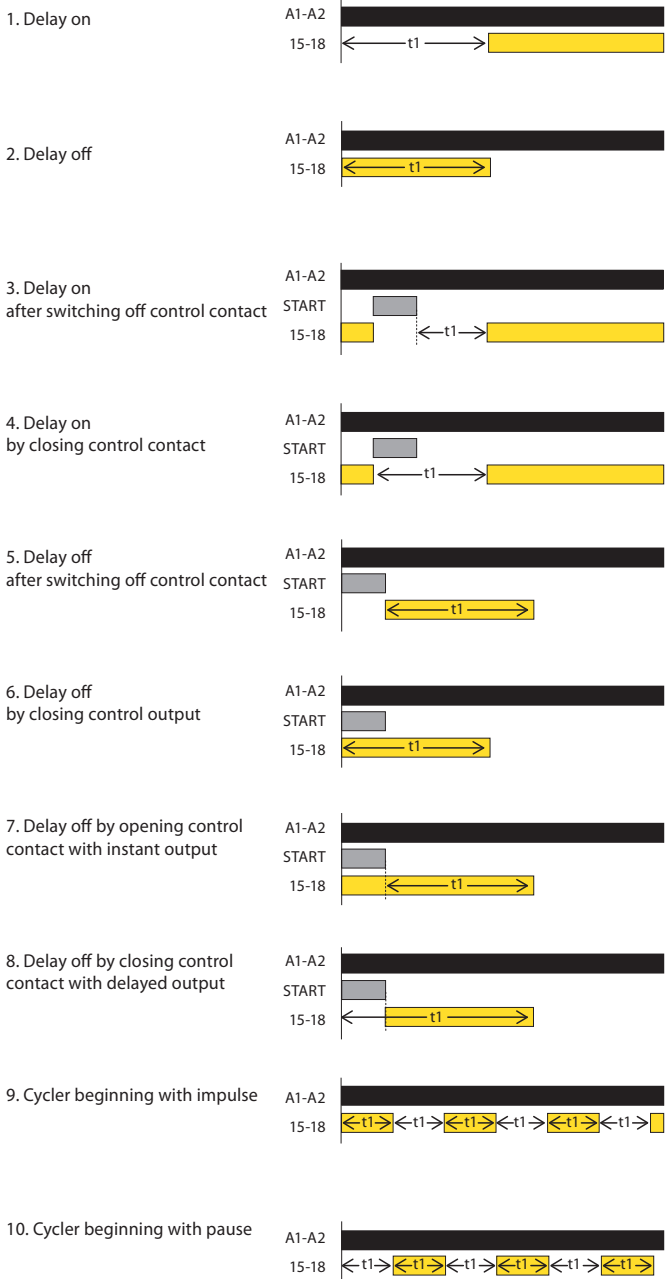


PDR-2/B

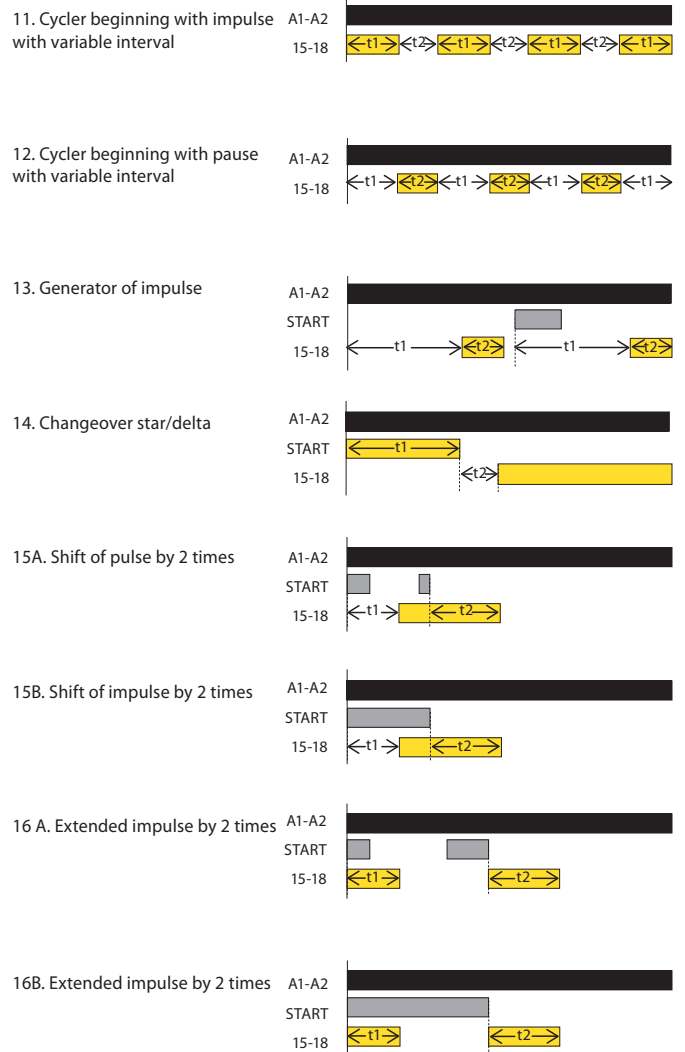


Function

Functions for PDR-2/A and PDR-2/B



Functions for PDR-2/A



Recommendation:
PDR-2/B is replacing 2 simple time relays = 2 in 1.